

# Leica Application Suite

Montage Module

*Leica*

MICROSYSTEMS

## LAS Montage Module

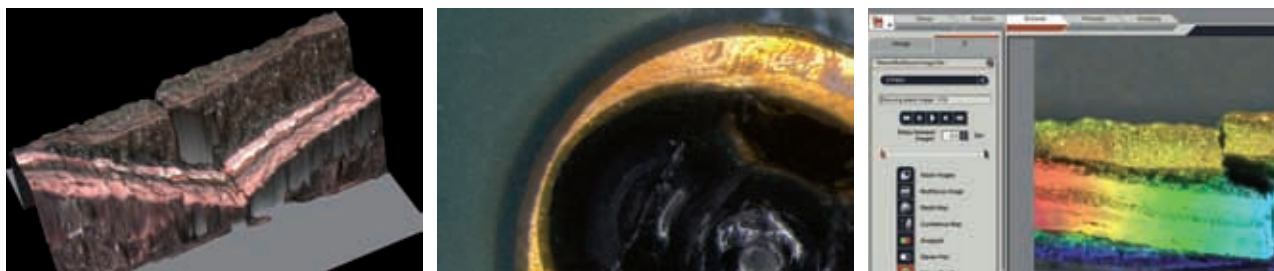
LAS Montage is a powerful module that assists microscopists in effortlessly acquiring a series of Z-Stack images to create a single sharp composite montage of exceptional quality and resolution. The LAS Montage module provides a simple approach along with intuitive tools, from set up through to capture, for the automatic acquisition of extended depth-of-focus images taken at different Z positions. By stipulating a start and end position for image acquisition along with the number of images to be taken, the LAS Montage module gives total flexibility in determining individual needs. The versatile nature of this module means that images not required, can optionally be excluded from a Z-stack during montage compilation. With the option to apply further enhancements to the final montage, based on the confidence image, LAS Montage provides the optimum solution for all extended depth of focus imaging needs.

## LAS3-D Viewer

With an optional LAS 3-D Viewer Module, you can further extend the visible detail of a montage image. The LAS 3-D Viewer option allows a montage image to be placed over the depthmap and color coded so that regions of similar height can be easily identified. The 3-D image can then be zoomed, maneuvered or rotated to provide a comprehensive view of specific features.

## Other features include:

- Advanced, versatile features produce excellent extended focus images from the widest range of samples.
- Fully integrated control of motorised focus on Leica Stereomicroscopes, Leica Macrocopes and Leica Compound microscopes, both upright and inverted.
- Comprehensive digital camera control functions including the ability to adjust focus position on live image display.
- Simplified operation by automatically adjusting step size and the number of images to microscope magnification, aperture and camera resolution.
- Images from microscopes with non-telecentric optics can be automatically aligned.
- Depth map and confidence images are produced to increase the accuracy of the extended focus image.
- Create Stereo Pair, Anaglyph and Colour Relief images to further enhance visualisation and increase specimen understanding.
- 3-D Viewer creates a 3-D surface model that can be viewed or lit from any angle so that details can be closely observed.

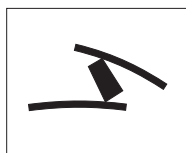


Order number

**12730070**

Leica Application Suite – Montage Module

Winner 2005



Innovationspreis  
der deutschen Wirtschaft  
The World's First Innovation Award

[www.leica-microsystems.com/LAS](http://www.leica-microsystems.com/LAS)

**Leica**  
MICROSYSTEMS